

Marcon International, Inc.

Vessels and Barges for Sale or Charter Worldwide

P.O. Box 1170, 9 NW Front Street, Suite 201
Coupeville, WA 98239 U.S.A.
Telephone (360) 678 8880
Fax (360) 678-8890
E Mail: info@marcon.com
<http://www.marcon.com>

02 October 2018

2018 Sales and Charters

Marcon International is pleased to report 27 sales and two long-distance tows fixed this year. Several additional sales are pending. A 5,000HP ASD tug has been extended on a previously arranged long-term charter.

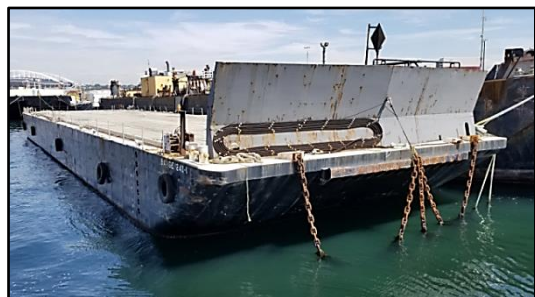
TradeWinds Towing of New Orleans towed the 190.0' x 58.0' x 7.0', 1985 built, steel drydock "Gulf Trans" from Larose, Louisiana to Cristobal, Panama with their tug "Rachel" on behalf of Central American Lines / Port and Service SA of Panama. After purchasing the drydock, new owners



spent several months preparing the unit for tow including installing a new 7' full width bow rake with internal framing. The 110.0' x 31.0' x 17.2' depth, U.S. flag, raised foc'stle bow, twin screw tug "Rachel" (ex- Challenger, Kinsman Challenger, Edie Stephens, Esther St. Philip, Offshore Endeavor, Equator) was built by Allied Shipyard in Larose, Louisiana. The ABS +A1 Towing, +AMS Unrestricted Service class, tug was repowered in 2014 by a pair of CAT 3516B diesels developing 3,800BHP with Reintjes 6.8:1 gears and 93" x 80" 4-blade fixed stainless steel props in kort nozzles. Tug endurance is about 32 days towing and bollard pull is 44.59 tons. Towing gear consists of an Intercon DD200 double drum winch, bow capstan for barge handling and



a full complement of towing hawsers, shackles, wire bridles and portable running lights. Marcon acted as sole broker in fixing the 1,412nm tow and handled a number of purchases & long distance tows for tug owners and a good half dozen purchases and sales for charterers over the years.



As part of their fleet renewal program, the 240' x 60' x 15' depth / 11.8' loaded draft "Barge 240-1" was sold by Crowley Marine Services, Inc. of Seattle, Washington to private Canadian interests in British Columbia. The U.S. flagged, 4,300 short ton deadweight, flat deck barge was built as one of four sisters in 1981 by FMC Corp. / Gunderson Marine of Portland, Oregon to transport general cargo, containers, drill rigs & pressure vessels, as well as modular units and other types of specialized cargoes.

The barge had 27' long bow & stern rakes with twin towing skegs aft, a breakwater forward plus a new concrete wear deck. One longitudinal and five transverse bulkheads formed 12 watertight compartments. The barge was classed ABS A1, Barge, Unrestricted Service and laid up in active class at the time of the sale. Marcon International acted as sole broker. Over the last 37 years, Marcon has sold 232 inland and ocean deck barges totaling about 1,070,000dwt capacity.



Marcon International, Inc.

Sale & Charter Report – 2018



The 5,750BHP AHTS “Endurance” (ex-Freedom Service) and small twin screw sister tugs “Roger G” and “Gus E” have joined Paradigm Marine LLCs existing Alaska fleet of oil spill response vessels, spill response barge, coastal tug and deck barges after purchase of the vessels from Crowley Maritime. The 207.0’ x 40.0’ x 16.8’ former anchor handling tug supply vessel was built as one of four sister-vessels for Zapata Gulf Marine Corp. in 1978 by Campbell Industries of San Diego, California – well noted for their

construction of large high seas, tuna super-seiners. Crowley operated the ABS +A1 Towing classed vessel for the last eighteen years as an oil spill response / escort vessel. The 920mtdw is fitted with a Smatco double drum tow winch. “Endurance” is powered by twin EMD 16-645E7A diesels developing a total of 5,750HP at 900RPM with controllable pitch props in kort nozzles. Bollard pull is abt. 82mt. “Roger

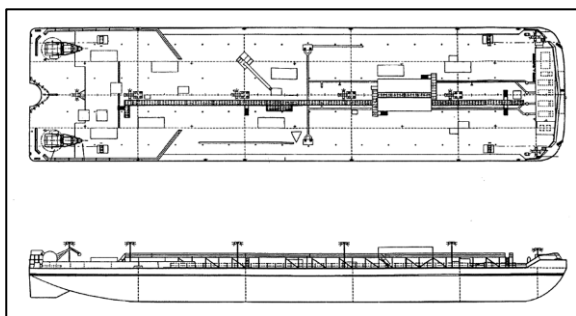


G” and “Gus E” are steel hull sister tugs with aluminum pilot houses built in 2000 by Rozema Boat Works; Mt. Vernon, Washington for Crowley to work as line-handling and barge assist tugs in Alaska. The tugs each measure 44’ x 16’ x 8.7’ and are powered by a pair of CAT 3306B main engines producing about 500BHP per boat, Twin Disc 5091 gears and fixed pitch props. Marcon has sold a number of vessels and barges over the years to Paradigm Marine. This is the third OSV and 13th and 14th tugs sold by Marcon this year and the 79th AHTS sold totaling 374,038BHP sold in the last 37 years.

Marcon International, Inc. is pleased to report the sale of five 400.0’ x 99.5’ x 25.0’ depth’ / 19.8’ loaded draft ocean deck / tank barges from Crowley Maritime Corp. of Seattle, Washington to several private U.S. West Coast buyers. The 16,200ltdw, U.S. flag, double rake barges are classed ABS +A1 Oil Tank Barges valid through 2020 – 2021 and have a capacity of abt. 149,000bbl liquid in 20 tanks. Two units, “Barge 450-6” and “Barge 450-7” were built in 1981 by FMC Corp. of Portland, Oregon and “Barge 450-1”, “Barge 450-3” and “Barge 450-8” were built by Bethlehem Steel Corp. in San Francisco, California in 1975, 1976 and 1981 respectively. The five barges were purchased by several new owners for further trading in non-petroleum service. Over the years, Crowley’s 450 series petroleum barges have carried gasoline, diesel, jet fuel, chemicals and crude oil at virtually all ports from the North Slope of



Alaska to the Caribbean, including the U.S. West, Gulf and East Coasts until replaced by new OPA’90 double hull AT/B barges ranging from 20,000 to 45,800dwt. Marcon acted as sole broker in the transactions. Since the sale of their oil rig supply boat “Gulf Mariner” in 1986, Marcon has handled well over 100 sales, charters and purchases of various vessels and barges on behalf of Crowley including the previous sales of the “450-2”, “450-4” and “450-12” which the first two sold to Nigeria for lightering service and the third to Sweden. Marcon has sold 162 ocean and inland tank barges totaling 9,016,735bbl (abt. 1,288,105dwt) capacity over the last 37 years.



Marcon International, Inc.

Sale & Charter Report – 2018

The 160' x 40' x 9.5' depth, ABS ocean flat deck / spud barge "Barge 220" built in 1965 by Kaiser Steel Corp. was sold to California buyers for further trading. The double raked barge built with 1/2" deck and 3/4" side shell plate had a capacity of abt. 1,100 tons of cargo on a 7.1' draft. Included in the sale were two 30" diameter x 65' long spuds. Marcon acted as sole broker in the sale and has handled previous sales and purchases for both the Seller and Buyer.



Yet another tug sold has been sold by Marcon this year with the delivery of a 117' x 34' x 17' depth with a 16' loaded draft conventional twin screw tug on private terms. The 1982 built, raised forecastle bow tug is powered by twin EMD 16-645E2s totaling 3,900BHP at 900RPM with Reintjes 5:1 gears and 117' x 94" fixed pitch props on 11" shafts. Towing gear consists of a Markey TDSD32 double drum winch with a wire capacity of 1,800' 2" wire. Tug is classed ABS +A1 Towing Service, +AMS Towing through July 2019 and original built to Ice Class C



standards. Tankage includes 120,000g fuel, 3,500g lube oil, 11,000g potable water and 8,500g ballast. This is the second time Marcon International has sold this tug as sole broker in the last 25 years.



Three additional U.S. flag, twin screw, conventional ocean tugs totaling 9,900BHP were sold on a private and confidential basis to domestic U.S. buyers for further trading out of competition. Marcon International acted as sole broker in all three of the sales and has handled numerous previous sales and purchases for Sellers in the past.

The 236.8' x 60.1' x 14.4' inland deck barge "Jessica" (ex-ITB 230) was sold by Salmon Bay Barge Line, Inc. of Seattle, Washington to Pacific Pile & Marine also of Seattle. The double rake, U.S. flag barge was built in 1965 by Gunderson of Portland, Oregon and has a clear deck of abt. 10,000ft², 7' high bin walls, a 4" concrete wear deck and internal double bottom tanks. Marcon acted as sole broker.



Seven U.S. flag, conventional, twin screw ocean tugs totaling 28,750BHP have been sold on a private & confidential basis to domestic U.S. buyers for further trading during the first quarter of 2018.

Marcon acted as sole broker in all seven of the sales and handled numerous sales, purchases and charters in the past for the parties involved. Over the past 37 years Marcon has brokered 334 tug sales and charters totaling 1,057,507BHP.



A 41.8m x 10.0m x 4.2m depth, 2007 built, anchor handling tug / utility vessel was sold on a private & confidential basis. The ABS +A1 (E) Towing Offshore Support Vessel is powered by twin 1,324kW Yanmar 8N21A-3N diesels developing a total of 3,575BHP at 900RPM and fixed pitch props in kort nozzles. The ABS certified bollard pull is abt. 45 tonnes and free running speed abt. 9kn economic / 12kn max. Maneuverability is enhanced by a 250kW bow thruster. Towing gear consists of 100T brake double drum winch, two 5 tonne



tuggers, one 5 tonne capstan, 100 tonne SWL hydraulic tow pins and 100 tonne SWL shark jaws. Vessel was fully in class and trading at time of sale. Marcon represented buyers, for whom we have handled previous purchases.

Marcon International, Inc.

Sale & Charter Report – 2018



After completion of a long-term contract, Marcon International, Inc. sold a 28,580mtdw double hull ocean tank barge to private interests in South America. The 502' x 84' x 42' depth x 8.5' light / 35.6' loaded draft black oil barge was originally built in 1980 by General Dynamics Corp. at a cost of US\$19.7 million as a single hull barge and extensively rebuilt and converted to double hull in 2000 to meet U.S. OPA'90 regulations. The ABS +A1, Oil Tank Barge has a capacity of abt. 188,000bbl cargo at 90% in 18 coiled and heated

two 12 million BTU Volcanic Hopkins heaters, 1,000HP bow thruster and a 86' deep notch. Marcon acted as sole broker in both the sale and the 2,780nm tow from the Gulf Coast using the 5,750BHP, 126' x 36', Vanuatu flag, Main Iron Works built tug "Isabelle" (ex-Jabbar), owned and operated by



TradeWinds Towing LLC of New Orleans to whom Marcon brokered the vessel in 2013. Marcon has handled numerous previous sales and purchases for both buyer and seller. Over the past 37 years Marcon has sold 157 tank barges totaling 8,271,735bbl capacity (abt. 1.18 million long tons deadweight).

Tres Marine Corporation of Larose, Louisiana sold their 2000-built mini-supplier "Peggy Jean" (ex-Mary R. Martin) to U.S. East Coast buyers by Hope Services Inc. of Dulac, Louisiana, the vessel measures 145' x 34' x 12', is powered by twin Cummins KTA38-



M0s developing a total of 1,700BHP at 1,800RPM and fitted with a 300HP 36" Thrustmaster bow thruster. She is capable of carrying 350 long ton cargo on a 80' x 32' clear deck aft and has tankage for 115,000g potable water, 90,000g fuel and 700g lube oil. Accommodations include 18 berths in six cabins. "Peggy Jean" is U.S.

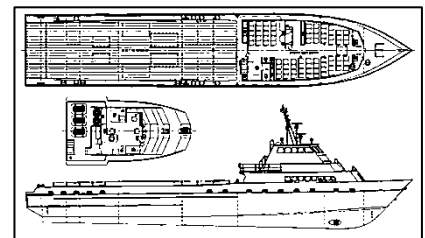


Coast Guard licensed and approved for 16 passengers and four crew, EEP Certified for 100 persons and has an ABS International Loadline. Marcon International and KMG Consulting acted as joint brokers.

Marcon International, Inc. is pleased to announce the sale of a U.S. flag 155' Fast Crew/Supply Vessel to private buyers. The vessel, measuring 155' loa x 151' lbp x 27' beam x 12.3' depth, was built in 2004 by Gulf Craft Inc. of Patterson, Louisiana. She is classed ABS + A1,



HSC Crewboat + AMS and USCG certified under Subchapter T. Capacity is 193mt deadweight including deck cargo of 153mt on 1,764ft² clear deck. Vessel is powered by four Cummins KTA38M2s developing a total of 5,400BHP at 1,950RPM driving 4 - 44" x 48" fixed pitch propellers providing a speed of 22-27 knots. Vessel has quarters for 8 in 5 cabins and passenger seating for 80. Marcon acted as sole broker in the transaction.



To date this year, Marcon International, Inc. has brokered 29 vessel and barge sales and tows / charters worldwide compared to 16 sales and tows / charters in 2017. Several additional sales are pending.

Looking back over the past 37 years, we have averaged 40 sales/charters per year. Since our first sale, Marcon has brokered a total of 1,455 vessels and barges sold or chartered and we are looking forward to breaking the 1,500 mark. A full list is available on request.

